

The Creation Research Society: Fifty Years of Service, 1963–2013

Donald B. DeYoung and Kevin L. Anderson*



Abstract

The year 2013 marks five full decades of service by the Creation Research Society. The 50-year golden anniversary is an appropriate time to reflect on the progress of this unique ministry. This article is not a comprehensive history of the Society, which would fill a large volume. Instead, the structure, governance, and developments of the Society over the years are described, along with some personal anecdotes. It is clear that the Creation Research Society has touched many lives directly and been an encouragement to countless others over five decades. All personal comments are the views of the authors rather than those of the Society or governing board.



Figure 1 (left). Dr. Walter Lammerts, first president of the CRS Board of Directors. His initiation of correspondence with several other creationists progressed into two meetings that resulted in formation of the Society.

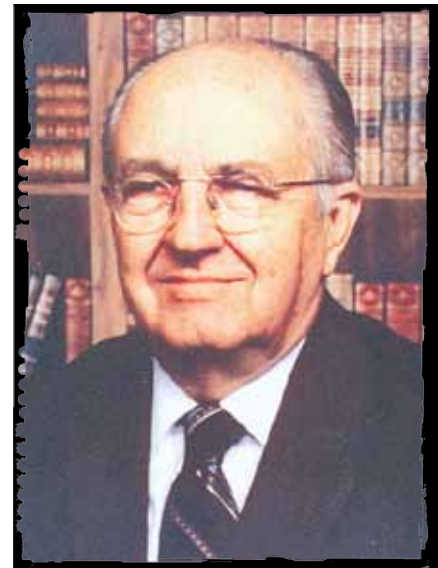


Figure 2 (right). Dr. Henry Morris, coauthor of *The Genesis Flood*, a member of the original CRS Board of Directors and an editor of the first issue of the *Creation Research Society Quarterly*.

* Donald B. DeYoung, Grace College

Kevin L. Anderson, Van Andel Creation Research Center, Chino Valley, AZ



Figure 3. The Van Andel Research Center. Initial construction of the 3,000-square-foot main building (a) and the facility in 2012 (b).



Figure 4. Dr. John and Gerry Meyer. Dr. Meyer was a member of the CRS Board of Directors and the first director of the Van Andel Creation Research Center.

Introduction

The Creation Research Society (CRS) is a professional membership society dedicated to promoting the Creation worldview through education, research,

and writing. Society tenants include a recent, supernatural creation, 24-hour days of biblical Creation, literal first parents of mankind named Adam and Eve, a year-long, global Noachic Flood as de-

scribed in Genesis chapters 6–8, and rejection of macro-level evolution and common descent.

The Society maintains no formal affiliation with any other scientific or reli-

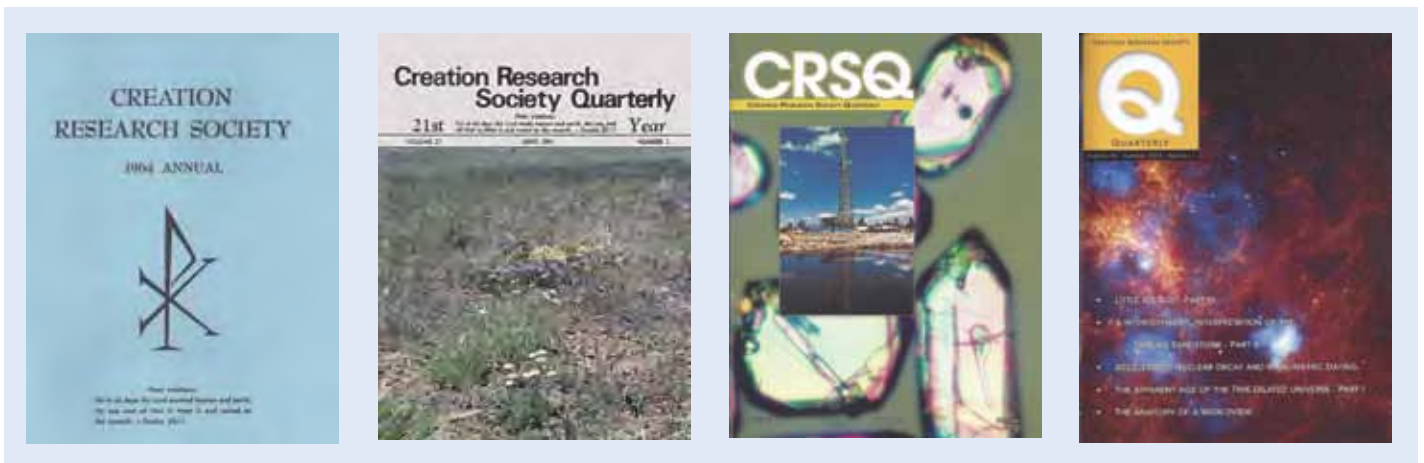


Figure 5. Sample issues of the *Creation Research Society Quarterly* over its 49-year history, including the inaugural issue (far left) published in June 1964.

gious organization. At the same time, however, there is close cooperation with like-minded creationist organizations in conferences, publications, and research projects. The Society avoids political and legislative debate or lobbying activity and is in full compliance with regulations for a nonprofit organization.

History

Following years of informal correspondence, a team of ten scientists favoring biblical Creation held two meetings in 1963 (Rusch, 1982). At the second meeting, held at the home of John Grebe (Midland, MI), they began the initial organization of the Creation Research Society (Table 1 and Figure 1). This action resulted largely from concerns with trends away from a literal, biblical understanding of Creation by the American Scientific Affiliation, an organization of Christian scientists formed in 1941. It was decided there was a need for an organization that promoted the scientific evidence and consistency of the biblical account of Creation. This included evidence that Creation had occurred only a few thousand years ago

and that the earth had been covered by a worldwide flood. Formation of the Society and the initial board leadership is described by Henry Morris (Morris, 1984, pp. 171–203).

It is no coincidence that in 1961, two years previous to the formation of the Society, *The Genesis Flood: The Biblical Record and Its Scientific Implications* by John C. Whitcomb and Henry M. Morris was published (Figure 2). This was a time of active debate concerning biblical origins, an issue that continues undiminished today. The *Genesis Flood* book remains in print today accompanied by hundreds of more recent books and DVDs supporting biblical Creation.

Table 2 lists all 49 CRS board members who have served through 2012, both past and present, including their terms of service. The total list includes many leaders of the Creation movement across the decades. Retired board member George Howe holds the record for years of service at 41 years. Jean Lightner added a female perspective to the board starting in 2009.

A timeline of significant events in the history of the Creation Research Society can be found on pages 10–11.

Van Andel Creation Research Center

In the late 1970s, the Society began planning to build a center with the purpose of providing a facility for conducting research. Soon afterward, some land in north central Arizona was purchased for this purpose. A few years later, a gift from the Jay and Betty Van Andel Foundation provided sufficient funding for the purchase of additional land and construction of the Van Andel Creation Research Center (VACRC)(Figure 3). Later, a botanical greenhouse and a second building were constructed. This second building currently provides a warehouse for the Society's bookstore and storage of all past issues of the *Creation Research Society Quarterly*. A more detailed history of the facility has been given by John Meyer (Meyer, 1999), who also served as the first director of the center (Figure 4).

Society Structure

CRS membership as of June 2012 totals 1626 worldwide. Of these, 663 members hold postgraduate degrees in science or engineering. The Society has several categories for membership and *Quarterly* journal subscriptions. These include

Table 1. Members of the original Board of Directors of the Creation Research Society.

Name	Discipline	Professional Affiliation in 1963
Duane Gish, Ph.D.*	Biochemistry	Upjohn Chemical Co.
John Grebe, D.Sc.*	Nuclear Physics	Dow Chemical Co.
John Klotz, Ph.D.*	Genetics	Concordia College (Ft. Wayne)
Walter Lammerts, Ph.D.*	Genetics	Germain's
Karl Linsenmann, M.D.*	Physician	Physician in Midland, MI
Frank Marsh, Ph.D.*	Botany	Andrews University
John Moore, Ed.D.*	Science Education	Michigan State University
Henry Morris, Ph.D.	Engineering	Virginia Tech
Wilbert Rusch, Sr., M.S.*	Biology & Geology	Concordia College (Ann Arbor)
William Tinkle, Ph.D.	Zoology	Taylor University

*Those attending the organizing meeting of the Society.

voting, sustaining, student, senior, life, and subscriber categories. The categories are described in issues of the *CRS Quarterly* and on the Society website www.CreationResearch.org.

Communication channels with members include offices at the research

laboratory in Chino Valley, Arizona, the website www.CreationResearch.org, the Society's Facebook page, the CRSnet online discussion site, and several publications. The Society also organizes occasional Creation conferences. Recently the Society has begun holding two-day

scientific meetings. The first of these meetings was held in July 2009 at the University of South Carolina Lancaster (Lancaster, SC) (Figure 6). Also initiated during this conference was the Henry M. Morris Memorial Lectures series, with Dr. Morris's *Genesis Flood* coauthor,

Table 2. Past and present board members of the Creation Research Society.

Board Members	Years of Service	Years of Term
*Armitage, Mark H.	7	2006–
Armstrong, Harold L.	15	1969–1984
Aufdemberge, Theodore P.	19	1993–2011
Barnes, Thomas G.	20	1963–1983
Boylan, David	21	1977–1998
Burdick, Clifford	20	1963–1968, 1970–1986
Butler, Larry	6	1969–1975
*Chaffin, Eugene F.	25	1988–
Davidheiser, Bolton	2	1966–1968
Dean, Douglas	2	1966–1968
*DeYoung, Donald B.	27	1986–
*Faulkner, Danny	8	2005–
Frair, Wayne F.	31	1970–2001
Gentet, Robert E.	11	1992–2003
Gish, Duane T.	34	1963–1997
Goette, Robert L.	4	1995–1999
Grebe, John J.	11	1963–1974
Harris, R. Laird	2	1963–1965
*Hill, Robert	2	2011–
Howe, George F.	41	1966–2008
*Humphreys, D. Russell	21	1992–
Kaufmann, David A.	26	1984–2010
Klotz, John W.	29	1963–1992
Korthals, Richard	21	1966–1987
Lammerts, Walter E.	15	1963–1978
Lester, Lane P.	14	1976, 1993–2003, 2006–2009

Board Members	Years of Service	Years of Term
*Lightner, Jean	4	2009–
Linsenmann, Karl W.	11	1963–1974
*Locklair, Gary	15	1998–
Lumsden, Richard D.	2	1994–1996
Marsh, Frank L.	6	1963–1969
Meyer, John R.	15	1975–1990
Monsma, Edwin	1	1963
Moore, John N.	23	1963–1986
Morris, Henry M.	19	1963–1982
Mulfinger, George, Jr.	12	1975–1987
*Oard, Michael J.	14	1999–
*Reed, John K.	13	2000–
Rodabaugh, David J.	15	1988–1997, 2005–2009
Rusch, Wilbert H., Sr.	27	1963–1990
*Samec, Ronald G.	12	2001–
Slusher, Harold	22	1963–1985
Smith, E. Norbert	8	1979–1987
Tinkle, William	16	1963–1979
Warriner, David A.	2	1963–1965
Webb, Willis L.	2	1963–1965
Williams, Emmett L.	34	1969–2003
*Wolfrom, Glen W.	30	1983–
Zimmerman, Paul A.	19	1963–1969, 1980–1994

*Current board member



Figure 6. Attendees of the 2009 CRS Conference at the University of South Carolina Lancaster.

Dr. John Whitcomb, providing the inaugural lecture (Figure 7). Subsequent Memorial lectures have been delivered by Dr. Duane Gish and Dr. Gary Parker.

The flagship journal of the Society is the *Creation Research Society Quarterly* (CRSQ), published continually since 1964 (Figure 5). This journal features peer-reviewed, technical research articles. A number of significant Creation research articles have appeared in CRSQ, providing decades of foundational work for Creation science. The journal also contains reviews of books and videos, editorials, letters to the editor, and board minutes. Also, since 1996, the Society has provided a popular-level publication *Creation Matters*. This

publication contains a variety of articles, including news articles, commentary, and semi-technical material. Authorship in either of these publications is

not limited to Society members. Annual membership dues do not cover the total cost of publication. The balance comes from private gifts to the Society.



Figure 7. Dr. John Whitcomb, coauthor of *The Genesis Flood*, offered the inaugural Henry M. Morris Memorial Lecture at the CRS Conference at the University of South Carolina Lancaster (2009).



Figure 8a. CRS Board of Directors (circa 1995). Members shown (l-r) Glen Wolfrom, George Howe, John Meyer (Director, VACRC), Russell Humphreys, Richard Lumsden, Duane Gish, Eugene Chaffin, Don DeYoung, Emmett Williams, Robert Gentet, Wayne Friar, Lane Lester, Theodore Aufdemberge, David Kaufmann.



Figure 8b. CRS Board of Directors (2013). Members shown (l-r) Kevin Anderson (Director, VACRC), Diane Anderson (Administrative Assistant), Jean Lightner, Don DeYoung, Danny Faulkner, Mark Armitage, Mike Oard, Glen Wolfrom, Robert Hill, Ron Samec, Eugene Chaffin, Russell Humphreys, Gary Locklair.

Table 3. List of Creation Research Society Board Presidents and CRSQ Senior Editors.

CRS Board President	Dates	Years of Service	
Walter E. Lammerts	1963–67	4	
Henry M. Morris	1967–73	6	
Thomas G. Barnes	1973–77	4	
George F. Howe	1977–83	6	
Wilbert H. Rusch	1983–87	4	
Wayne Frair	1987–93	6	
Emmett Williams	1993–99	6	
Don DeYoung	1999–	14	

CRSQ Senior Editor	Dates	Total Years	Volumes
Walter E. Lammerts	1964–68	5	1–5
George F. Howe	1969–73	5	6–10
Harold Armstrong	1974–83	10	11–20
Emmett L. Williams	1984–88	5	21–25
Don DeYoung	1989–93	5	26–30
Gene Chaffin	1994–98	5	31–35
Emmett L. Williams	1999–2003	4	36–39
Kevin Anderson	2003–	10	40–

Table 4. Fellows of the Creation Research Society

Name	Year of Award
John J. Grebe*	1975
Walter E. Lammerts*	1975
William J. Tinkle*	1975
Frank L. Marsh*	1976
Wilbert H. Rusch, Sr.*	1980
Thomas G. Barnes*	1980
Henry M. Morris*	1983
Richard G. Korthals*	1984
John W. Moore	1984
Wayne F. Frair	1988
John W. Klotz*	1988
George L. Mulfinger*	1988
George F. Howe	1989
Emmett L. Williams*	1990
Paul A. Zimmerman	1990
John R. Meyer	1992
Duane T. Gish*	1992
Glen W. Wolfrom	1994
Dick Lumsden*	1998
David Boylan	2000
Don DeYoung	2000
Ted Aufdemberge	2006
David Kaufmann	2009
Gene Chaffin	2012

* Deceased



Figure 9 (above). 1987 Board Meeting (l–r): David Kaufmann, Wayne Frair, Don DeYoung, Norbert Smith, Duane Gish, David Boylan, Richard Korthals.



Figure 10 (right). Offline discussion at 1989 Board Meeting between Drs. Emmett Williams (left) and Wilbert Rusch.

Table 5. *Creation Research Society Quarterly* Dedications.

Name	Year	Issue (number)
William J. Tinkle	1967, 1982	4(1), 19(2)
Walter E. Lammerts	1970, 1996	7(1), 33(2)
John J. Grebe	1971, 1985	8(1), 21(4)
Thomas G. Barnes	1972	9(1)
Frank L. Marsh	1976	13(1)
Wilbert H. Rusch, Sr.	1981	18(1)
Henry M. Morris	1984	21(1)
Richard G. Korthals	1985	22(1)
Harold L. Armstrong	1985	22(2)
John N. Moore	1986	23(1)

Name	Year	Issue (number)
George F. Howe	1990	27(3)
Paul A. Zimmerman	1991	27(4)
Emmett L. Williams	1991, 2011	28(1), 48(2)
Duane T. Gish	1992	29(3)
Wayne F. Frair	1994	31(1)
David Boylan	1995	32(1)
John Klotz	1996	33(3)
Richard Lumsden	1998	34(4)
John Meyer	2001	38(1)
Glen & Becky Wolfrom	2002	39(1)

Creation Research Society TIMELINE

First issue of the interdisciplinary *Creation Research Society Quarterly* published.

1964

The CRS produces a major biology text, *Biology: A Search for Order in Complexity*, edited by John Moore and Harold Slusher and published by Zondervan. The book brings national attention to the Society. The volume is still in print with a different publisher.

1971

1963

Formation of the Creation Research Society.

1968

Society membership reaches 1000.

1981

The CRS board votes to establish a research laboratory and purchases land in Arizona.

Board Structure

There is a standard procedure for Society members to apply for research grants. The amounts are not large but have encouraged many productive projects over the years. It is expected that such grants will result in research results published by the *CRSQ*.

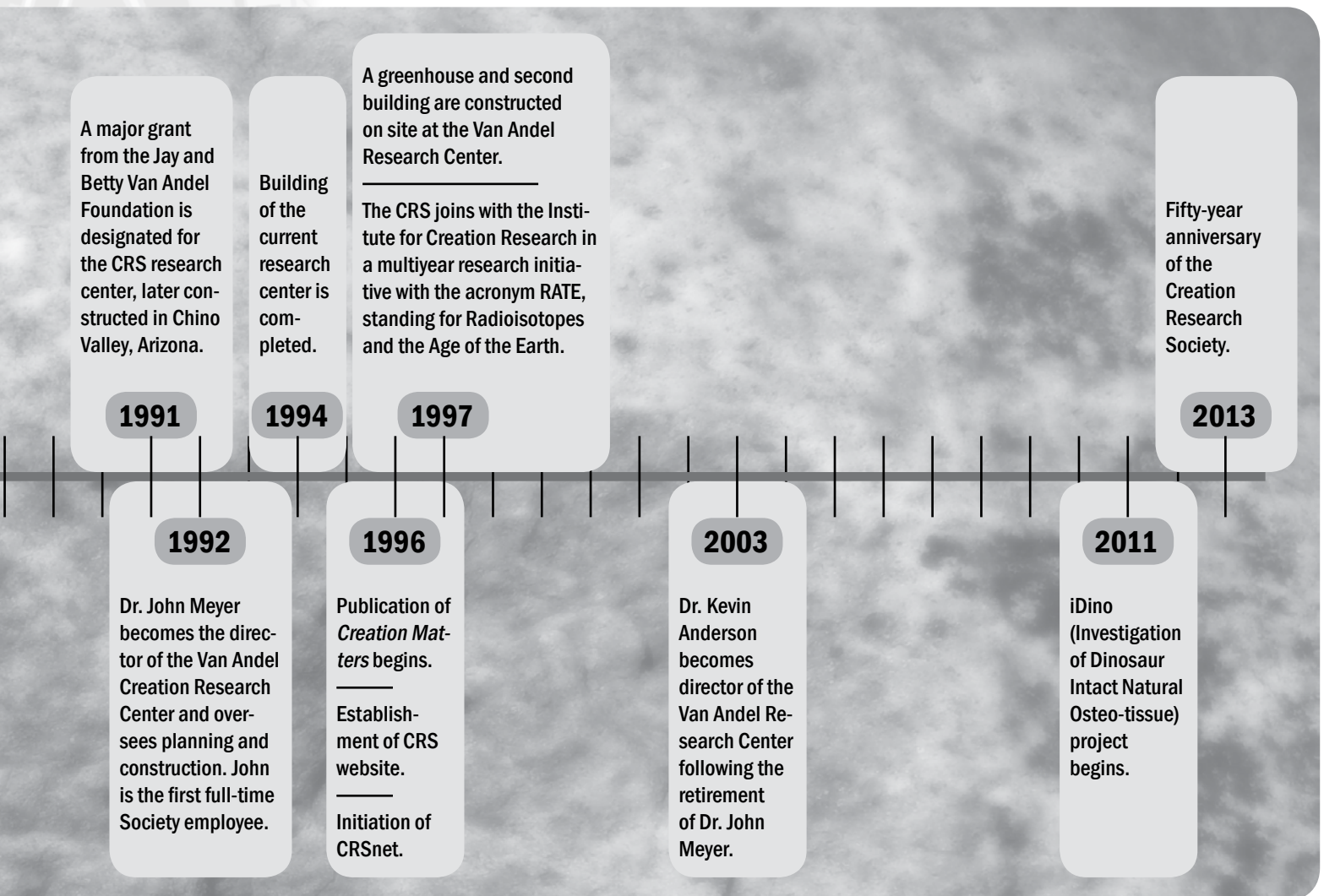
In addition to receiving the *CRSQ* and *Creation Matters* publication, members receive other Society benefits. These include discounts on books and videos from the Society bookstore, discounts to Society conferences, and access to CRSnet (an Internet discussion group). Also, members receive a periodic newsletter, which contains general Society news and announcements.

The CRS board follows Statement of Belief, Constitution, and Bylaw documents that guide the business of the Society. Board members are elected to three-year terms of service. There is no limit on length of board participation; however, a board member cannot be reelected on or after age 75.

The entire board meets annually for several days of business (Figure 8). For the first 30 years, 1963–1992, annual board meetings took place in Ann Arbor, Michigan, hosted by Concordia University. During these years several board members were associated with the school. Since 1993 the board meets

annually in various locations around the country. This provides opportunity to meet local CRS supporters and Creation groups, and give encouragement to area churches and creationist organizations. Several past meeting sites include Albert Lea, Minnesota (1999), Atlanta, Georgia (2000), Bozeman, Montana (2005), Los Angeles, California (2009), and Jacksonville, Florida (2011). Board meeting expenses are covered for board members; however, board service is on a volunteer basis without compensation.

To make meetings more efficient, the board has a detailed committee structure for conducting the board’s business. The



committees meet separately and then bring reports and recommendations to the full board. Current board committees include: constitution, periodicals, executive, publications, finance, research, Internet, Van Andel Laboratory, and membership.

Board meetings are open to Society members who can receive prior approval to attend. The sessions are informal, friendly, and productive. Meeting agendas include budgeting, long-range planning, research reports, serious moments, and even some humor. For example, Wilbert Rusch, board president during 1983–1987, commented that Society headquarters was initially a single drawer in his office filing cabinet. Emmett Williams, president from 1993–1999, cautioned the board during meetings, “If anyone takes off on a rabbit trail, I will get out my rabbit gun.”

Along with official business, board meetings include recognition of years of service, the sharing of current events in Creation, and even an occasional group song. Table 3 lists all the board presidents and CRSQ senior editors. The senior editor position is an especially important and time-intensive duty, overseeing the peer-review process and production of each journal.

Member Recognition

Society members may be honored with Fellow status. This recognition is reserved for those who have made a special contribution of their time and talents to the Creation Research Society. Table 4 lists those who have been honored with Fellow status to date.

Also, over the years many individuals who serve the Society have been honored by having a particular CRSQ issue dedicated to them. A photo and an accompanying article in the dedicated issue highlight the person’s work. Table 5 lists all CRSQ dedications. Society Fellows and CRSQ dedications have been largely limited to board members, although this is not a requirement.

Conclusion

This article gives a brief overview of the Creation Research Society. For a description of specific research projects, one may page through issues of the CRSQ (nearly 200 issues). They total more than 3000 pages of material promoting biblical Creation.

From time to time, individuals have admonished CRS board members to promote the Society, offering suggestions such as national advertising, major fund drives, mergers with other groups, major national conferences,

and increasing professional staff. The current board appreciates all input and works diligently toward a growing and strengthening Society. As an autonomous organization, though, the Society’s focus is upon scientific investigation and publication. Also, even though planning and longer-range goals always include increased activity and membership, the CRS board is determined to maintain stability and fiscal strength (e.g., the Society has always remained debt free). In 1969, pioneer board member William Tinkle summarized the Society’s position in reply to some suggestions of major change: “We (the CRS) are just ourselves.” This simple formula has brought the Creation Research Society through its first 50 years. Prayerful, measured progress will carry the Society through the next 50 years.

References

- Meyer, J.R. 1999. The Van Andel Creation Research Center: a unique creationist resource. *Creation Research Society Quarterly* 36:68–71.
- Morris, Henry. 1984. *History of Modern Creationism*. New Leaf Publishing Group, Green Forest, AR.
- Rusch, W.H. 1982. A brief statement of the history and aims of the CRS. *Creation Research Society Quarterly* 19:149.